

LOCATION MAP
N.T.S.

I HEREBY CERTIFY THAT THE WITHIN MAP SHOWING PROPOSED BOUNDARIES OF ANNEXATION MAP NO. 6, FOOTHILLS AMERICAN DREAM TO COMMUNITY FACILITIES DISTRICT NO. 4, CITY OF ROSEVILLE, COUNTY OF PLACER, STATE OF CALIFORNIA WAS APPROVED BY THE CITY COUNCIL OF THE CITY OF ROSEVILLE, AT A REGULAR MEETING THEREOF HELD ON THE 3 DAY OF August, 2016, BY ITS RESOLUTION NUMBER 16-331

Sonia Orozco
SONIA OROZCO, CITY CLERK
CITY OF ROSEVILLE
PLACER COUNTY, CALIFORNIA

FILED THIS 9th DAY OF August, 2016, AT THE HOUR OF 14:13 O'CLOCK, P.M.,
IN BOOK 3 OF MAPS OF COMMUNITY FACILITIES DISTRICT, AT PAGE 50-7
IN THE OFFICE OF THE RECORDER OF THE COUNTY OF PLACER, STATE OF CALIFORNIA.

DOC NO. 2016-0065531 RYAN RONCO
PLACER COUNTY RECORDER
FEE: \$8.00 BY: *J. Mason*
DEPUTY

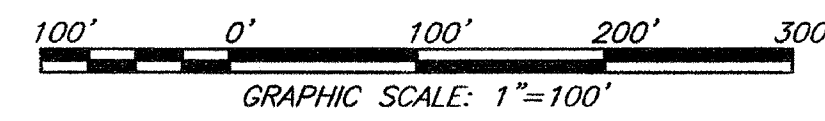
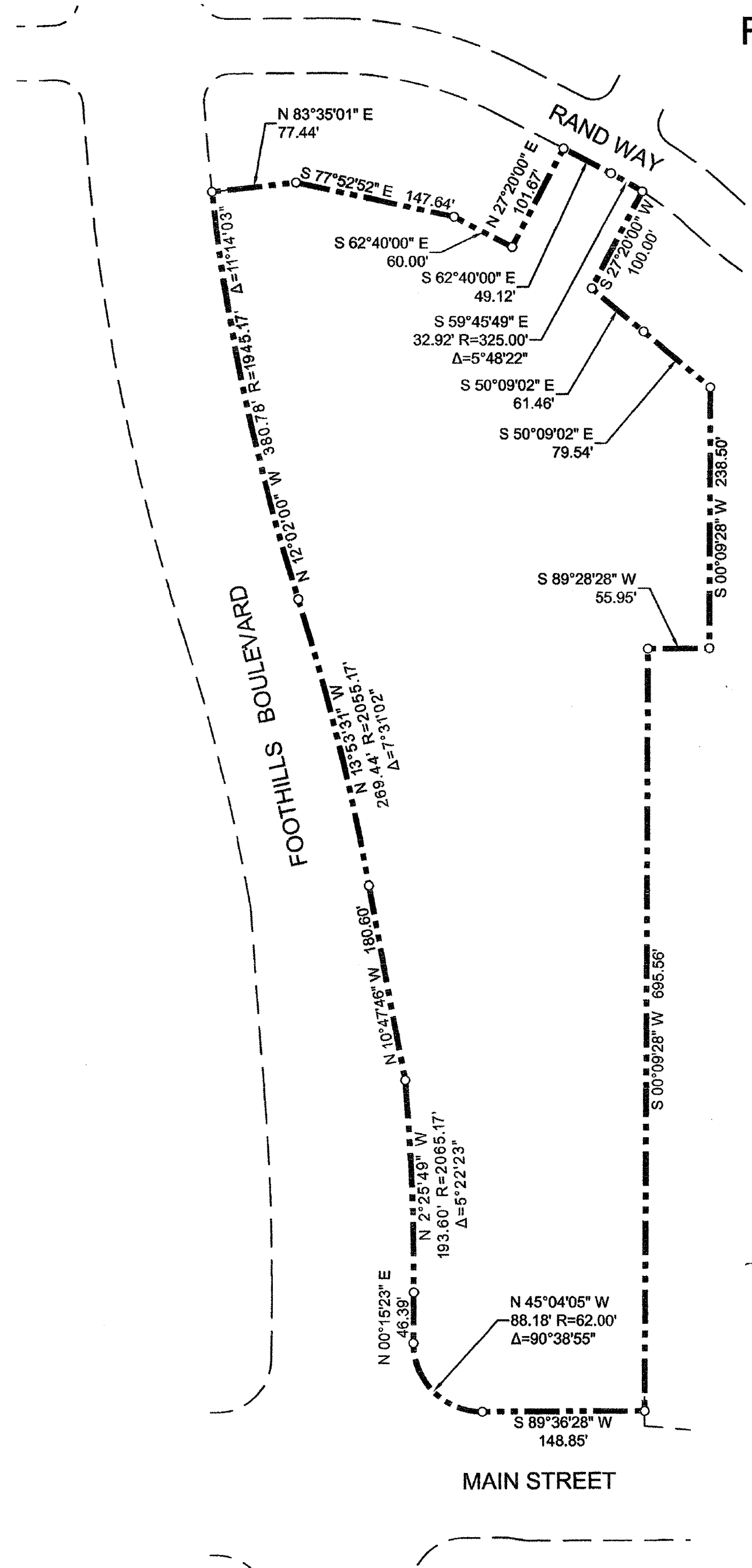
FILED IN THE OFFICE OF THE CITY CLERK OF THE CITY OF ROSEVILLE, COUNTY OF PLACER,
STATE OF CALIFORNIA THIS 3 DAY OF August, 2016.

Sonia Orozco
SONIA OROZCO, CITY CLERK
CITY OF ROSEVILLE
PLACER COUNTY, CALIFORNIA

PROPOSED BOUNDARY MAP
ANNEXATION MAP NO. 6 OF COMMUNITY FACILITIES
DISTRICT NO. 4 (PUBLIC SERVICES) OF THE CITY OF
ROSEVILLE, COUNTY OF PLACER, STATE OF CALIFORNIA
FOOTHILLS AMERICAN DREAM

SCALE: 1" = 100'

SHEET 1 OF 1



LEGEND:

- BOUNDARY OF ANNEXATION
- o DIMENSION POINT

REFERENCE IS HEREBY MADE TO THAT CERTAIN MAP FILED MAY 22, 2008, IN BOOK 3 OF MAPS OF COMMUNITY FACILITIES DISTRICT, AT PAGE 50-5, IN THE OFFICE OF THE PLACER COUNTY RECORDER, STATE OF CALIFORNIA, WHICH THIS ANNEXATION MAP AFFECTS.

* 50

MAP PREPARED BY:

IDW BAKER-WILLIAMS ENGINEERING GROUP
Engineering / Surveying / Land Planning / Entitlement Processing / GPS Services
6020 Rutland Drive, Suite 19 ~ Carmichael CA 95608
(916) 331-4336 ~ fax (916) 331-4430 ~ office@bwengineers.com